

MATERIAL
STST300 SERIES

FINISH

TOOLING

NOTES

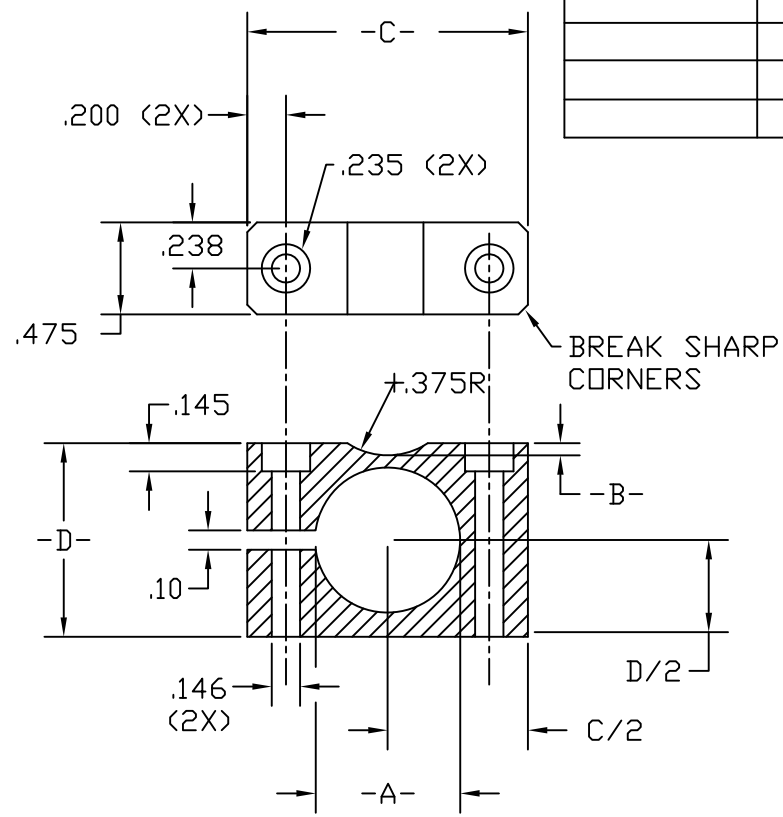
DIMENSIONS

SCREWS
2 PER CLAMP
PART NO.

1ST. USED
ON

PART NO.	DIM -A-	DIM -B-	DIM -C-	DIM -D-	SCREWS 2 PER CLAMP PART NO.
C002-0023	.750	.062	1.45	1.00	S002-0096
C002-0024	.875	.062	1.45	1.07	S002-0096
C002-0025	.375	.062	1.07	.63	S002-0095
C002-0026	.625	.120	1.45	1.00	S002-0096

REVISIONS



ALL MACH. SURF.
✓ MAX
UNLESS
OTHERWISE SPEC.

- UNLESS OTHERWISE SPEC. ALL THDS. TO UN CLASS 2A OR 2B EFFECTIVE ENGAGEMENT TO BE 75% #6 AND UP, 60% #5 AND DOWN.
- DIM. (↻) DENOTES OUT OF SCALE.
- ALL DIM. SHOWN ARE AFTER PLATING.
- EXCEPT AS NOTED, ALL DIMENSIONS ARE IN INCHES.

TOLERANCE (UNLESS OTHERWISE SPECIFIED)
X.X = ±.03
X.XX = ±.010
X.XXX = ±.005
ANGULAR = ±1°

DR'N. BY / DATE	MAB	7-2 2010
CHECKED BY		
PROJ. ENG. APP.		
DEV. ENG. APP.		
MFG. ENG. APP.		

TITLE
CLAMP, MOUNTING



Route 83 Ellington, Connecticut 06029

DWG. SIZE
A

PART NO.
C002-0023

REV.